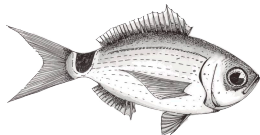


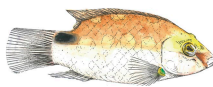
Especies emblemáticas del Puerto de Mazarrón



FREDI
Thalassoma pavo



OBLADA/DOBLADA
Oblada melanura



TORDO DE ROCA
Symphodus mediterraneus



SALPA
Sarpa salpa



SERRANO
Serranus scriba



SALMONETE
Mullus surmuletus



RASPALLÓN
Diplodus anularis



CHIRRETE
Atherina boyeri



HERRERA
Lithognathus mormyrus



PETO
Symphodus tinca



BODIÓN
Symphodus cinereus



JULIA/DONCELLA
Coris julis



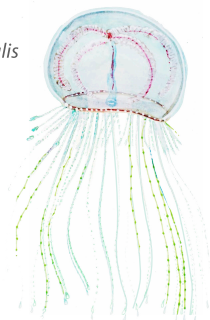
MÚJOL
Chelon labrosus



CANGREJO DE ROCA
Pachygrapsus marmoratus



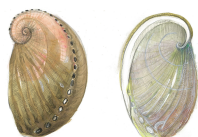
SEPIA
Sepia officinalis



AVISPA DE MAR
Olindias muelleri



PEPINO DE MAR
Holothuria tubulosa



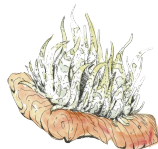
OREJA DE MAR
Haliotis tuberculata



ERIZO
Paracentrotus lividus



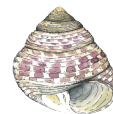
ANÉMOMA COMÚN
Anemonia viridis



Aiptasia mutabilis



Elysia timida

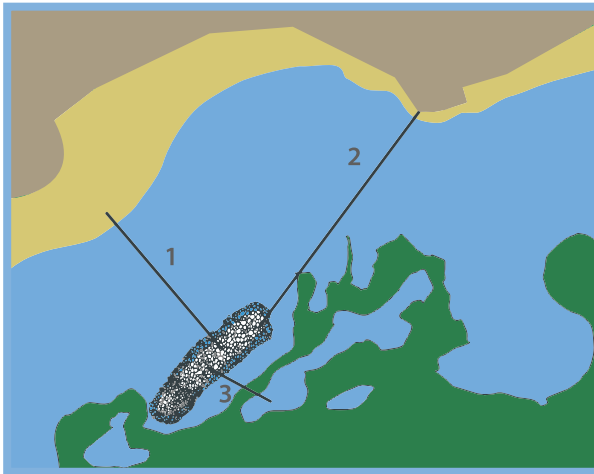


PEONZA
Phorcus turbinatus

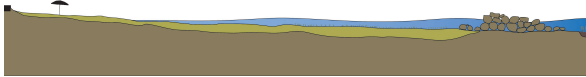




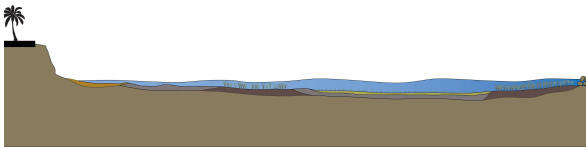
Puerto de Mazarrón Sumergido



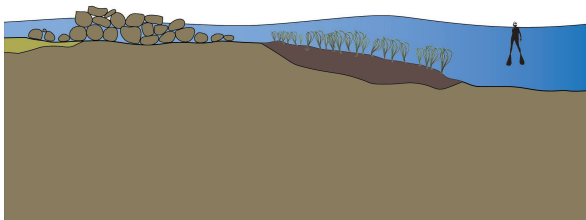
1



2



3



Caulerpa cylindracea



SOMBREILLO
Acetabularia acetabulum



ABANICO DE MAR
Padina pavonica



Posidonia oceanica



Cymodocea nodosa



Dasycladus vermicularis



ALGA SINUOSA
Colpomenia sinuosa



Dictyota fasciola



ESPONJA CATEDRAL
Sarcotragus fasciculatus



Sustrato rocoso



Arena



Mata de Posidonia



Mata muerta



Guijjaros



Posidonia oceanica



Cymodocea nodosa