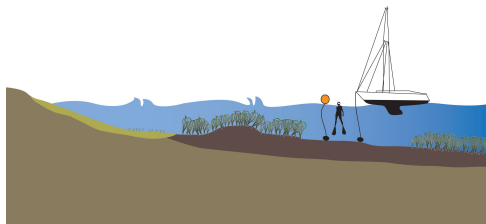


# La Azohía

Cartagena, ES

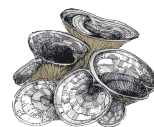
## Sumergida



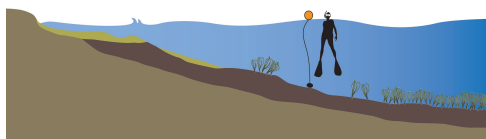
1



**SOMBREILLO**  
*Acetabularia acetabulum*



**COLA DE PAVO**  
*Padina pavonica*



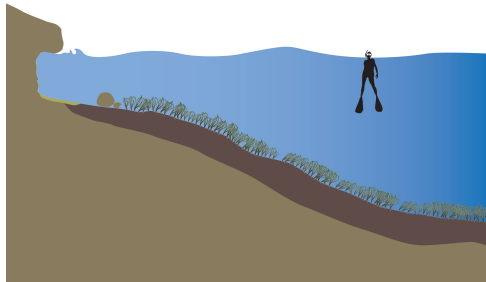
2



*Caulerpa cylindracea*



*Cystoseira amentacea*



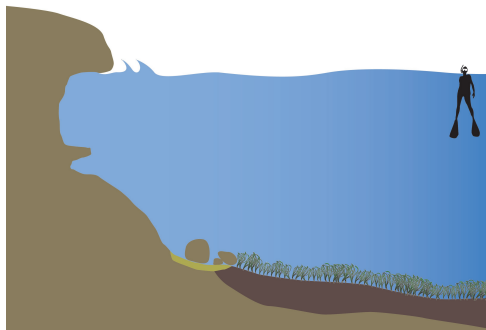
3



*Halopteris scoparia*



*Cymodocea nodosa*



4



*Posidonia oceanica*



Sustrato rocoso



Gravas y cantos



Mata de Posidonia



*Posidonia oceanica*

# Especies frecuentes en La Azohía



**MOJARRA**  
*Diplodus vulgaris*



**OBLADA/DOBLADA**  
*Oblada melanura*



**SALPA**  
*Sarpa salpa*



**MERO**  
*Epinephelus marginatus*



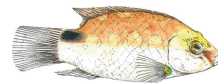
**SERRANO**  
*Serranus scriba*



**PEZ VERDE**  
*Thalassoma pavo*



**JULIA**  
*Coris julis*



**TORDO DE ROCA**  
*Symphodus mediterraneus*



**REYEZUELO**  
*Apogon imberbis*



**CASTAÑUELA**  
*Chromis chromis*



**RASCACIO**  
*Scorpaena porcus*



**CANGREJO DE ROCA**  
*Pachygrapsus marmoratus*



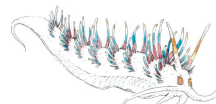
**PEONZA**  
*Phorcus turbinatus*



**NACRA**  
*Pinna rudis*



*Elysia timidus*



*Cratena peregrina*



**PULPO**  
*Octopus vulgaris*



**COHOMBRO DE MAR PARDO**  
*Holothuria tubulosa*



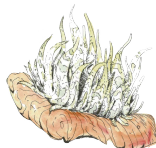
**ESTRELLA ROJA**  
*Echinaster sepositus*



**ESPIRÓGRAFO**  
*Sabella spallanzanii*



**ANÉMONA  
INCRUSTANTE AMARILLA**  
*Parazoanthus axinellae*



*Aiptasia mutabilis*



**TOMATE DE MAR**  
*Actinia equina*



**ANÉMONA COMÚN**  
*Anemonia viridis*

